

What would your fantasy castle look like?

The year is 1090. You have fought side by side with William and you have earned the title of being a great soldier. As a reward for being a loyal friend and servant William has decided to give you a large piece of land in Wales, it is a beautiful area and William has truly been kind.

The land is a particular violent area and the local people are likely to try and take over your castle and land. You had better build and defend your castle well or you will lose your land and your life!!!



To build and equip your castle you have been given **1000 gold pieces** by King William. Look at the cost of all the items in this booklet. You **must not overspend** on your budget. Therefore, you must decide which parts of a castle and castle defence are the most necessary.

You **MUST** buy at least one item from each page.

WALLS

A wall will stop the enemy from just walking in.

Pointy fence (palisade)

Quick, easy and cheap.
These are wooden poles
hammered into the ground.

50 gold pieces



Stone Wall

This wall is 1 metre thick and is
made out of good solid stone.

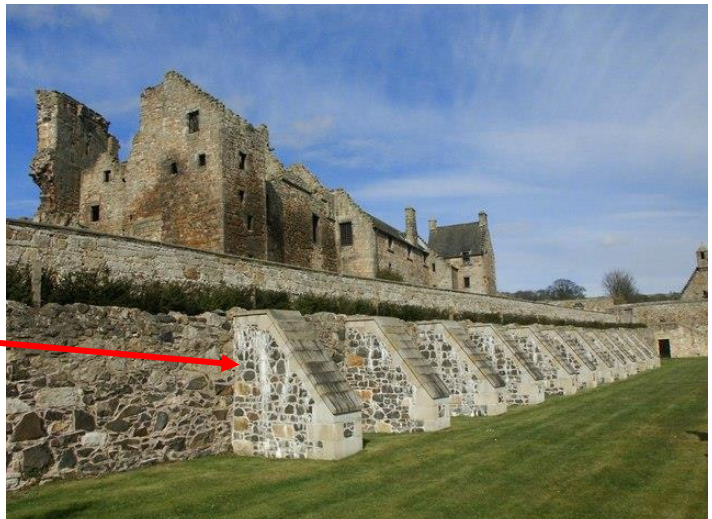
150 gold pieces



Buttressed Stone Wall

This wall has an extra section of
stone at the bottom. This makes
it harder for enemies to attack.

200 gold pieces



TOWERS

Towers help you to see the enemy and defend against them.

Look outs can be placed here as well as archers.

Towers must be bought in 4's.

Square Tower

This type of tower offers a good view of the surrounding area and can fit a large number of archers. It improves the defence of the castle as well as housing staff and soldiers.

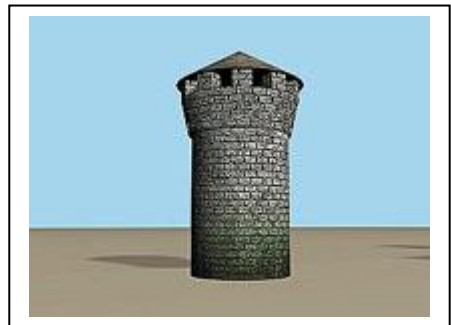
75 gold pieces per tower



Round Tower

The best towers available. The rounded shape of the tower prevents flying stones knocking off the corners (they just skim off the tower).

100 gold pieces per tower



(If your towers stick out of the walls, defenders can shoot along the walls with bows and arrows).

THE KEEP

This is the strong point of your castle and it is where you would fight to the death if your castle walls are attacked.

Wooden keep

Wood is plentiful and these keeps are easy to build.

100 gold pieces



Stone Keep

A strong defensive point that any enemy would find hard to attack.

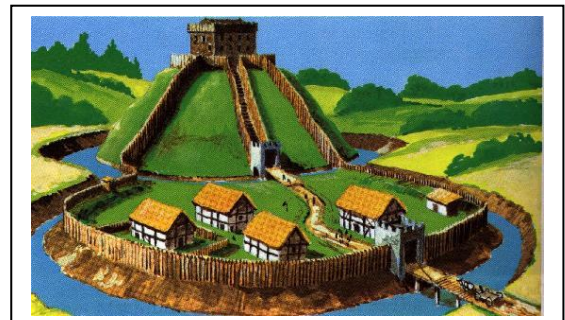
200 gold pieces



A Motte

You can build a hill to put your keep on top of. It makes it harder for the enemy to attack.

75 gold pieces



GATE DEFENCES

These defences are designed to make attacking much harder and affect how people can get into your castle.

Standard Gatehouse

Comes with a general wooden door.
This is cheap but not a great defence.

50 gold pieces



Drawbridge

A wooden bridge over a pit, ditch or moat, which can be raised, lowered or taken away. It is the only way in and out of a castle

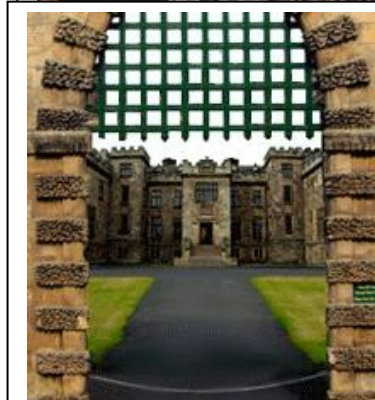
75 gold pieces



Portcullis

Wood or iron grill dropped in a slot to close a gateway. It is strong and sturdy and gives good defence to the entrance of your castle.

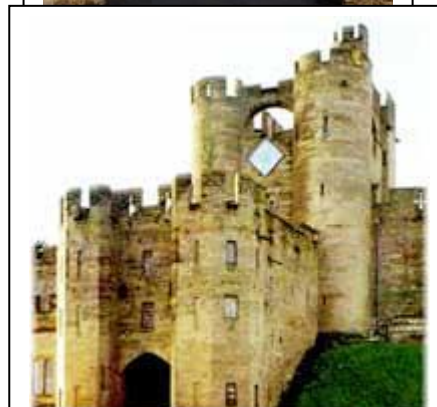
150 gold pieces



Barbican

An outer defence that protects a gateway. It makes it much harder for an attacker to get in.

100 gold pieces



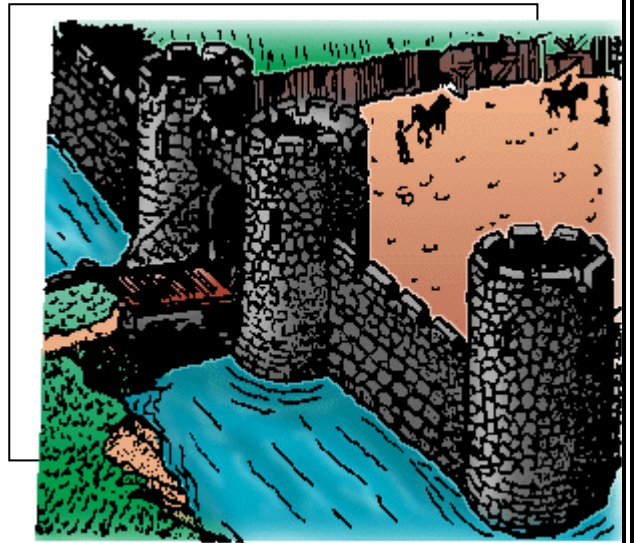
OTHER DEFENCES

Moat

Steep dry, or water filled, ditch to protect the castle. To have a moat you must also buy a drawbridge.

50 gold pieces dry

75 gold pieces water filled



Machicolations

Small openings in the floor or overhanging wall through which the enemy could be attacked.

100 gold pieces



Murder Holes

Ceiling holes to fire down at attackers usually in a Barbican.

100 gold pieces

Crenellation

This is a wall with alternative high and low sections at the top. This helps protect archers.

75 gold pieces



WEAPONS

These are important to defend the castle. Without weapons you cannot defeat your enemy.

Bows and Arrows

These are useful for keeping the enemy at bay but if they breach your walls then they are not very effective.

100 gold pieces for 100



Swords

If invaders enter your castle these blades will be useful at stopping the enemy from coming any further.

150 gold pieces for 20



Shields

These would be useful defending against any archers and swordsmen. Shields repel attacks and make the men feel more confident.

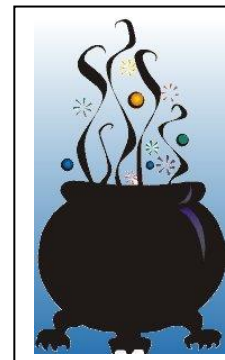
150 gold pieces for 10



Hot Oil or Tar

For pouring from your hoarding or murder holes

50 gold pieces



SUPPLIES

Your castle must be well supplied if you are to withstand any type of siege.

Well

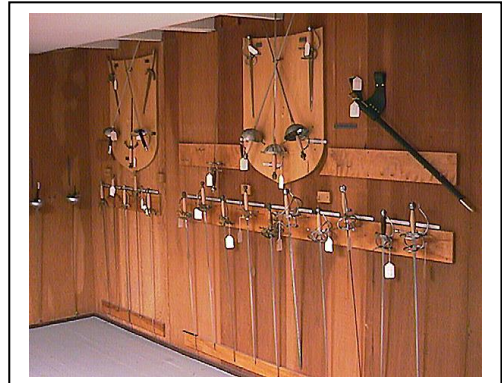
This is dug deep into the ground and makes sure you have a long and healthy water supply

50 gold pieces



Armoury

This is a place to store your weapons. This is vital in times of need as all Soldiers know where to get their weapons and the weapons will be in the best condition. With this you can store more than 50 weapons.



100 gold pieces

Food Store

This will give you and your men two weeks worth of supplies without your food going rotten.



100 gold pieces