

# Y Teledu



Amcan: -

To write varied and interesting sentences about T.V. programmes

# Starter

*Ffordd dda i ymlacio*

A waste of time

full of tension

Dydy'r actorion ddim yn realistig

ofnus

Wir i fywyd

lots of fun



Pryd wyt ti'n gwylio'r teledu?

**When do you watch TV?**

Dwi'n gwylio'r teledu...

I watch TV...

...bob dydd

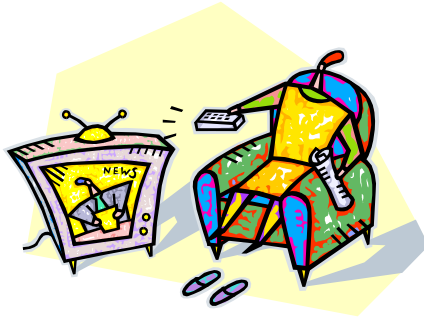
...bob nos

...gyda'r nos

...nawr ac yn y man

...ar nos Sadwrn

...ar fore Sul



hefyd ar  
weithiau ar  
fel arfer  
yn aml

also on  
sometimes on  
usually  
often

...every day

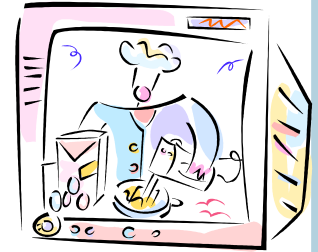
...every night

...at night

...every now and then

...on Saturday night

...on Sunday morning



...at the weekend

...if there's something good on

...after school

...after going home

...from time to time

...it depends

...in my leisure time

...between 8 and 9

...when I can

...when I have time



... ar y penwythnos

... os oes rhywbeth da ymlaen

... ar ol ysgol

... ar ol mynd adre

... o bryd i'w gilydd

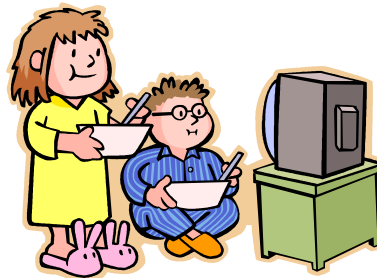
... mae'n dibynnu

... yn fy amser hamdden

... rhwng 8 a 9

... pryd dwi'n gallu

... pan mae amser gyda fi



# Gwaith Llafar



Beth wyt ti'n hoffi gwyllo?

Pam wyt ti'n hoffi gwyllo .....?

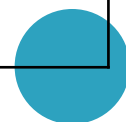
Pryd wyt ti'n gwyllo'r teledu?

Dw i'n hoffi gwyllo .....

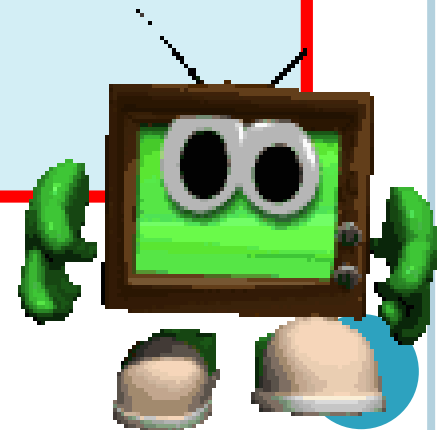
.. achos mae'n ....

Dw i'n gwyllo'r teledu .....

Enw	Gwyllo	Pam	Pryd



1. Sometimes I watch X Factor on Saturday night.
2. I watch T.V. after school if there's something good on.
3. Dw i ddim yn gwyllo'r teledu yn aml, mae'n well gyda fi chwarae ar y Xbox.
4. I usually watch T.V. at the weekend, but sometimes I watch after school.
5. O bryd i'w gilydd, dw i'n gwyllo teledu ar ol mynd adre, ond mae'n dibynnu os oes rhywbeth da ymlaen.





1. Sometimes I watch X Factor on Saturday night. *Weithiau dwi'n gwyllo X Factor ar nos Sadwrn.*
2. I watch T.V. after school if there's something good on. *Dwi'n gwyllo teledu ar ol ysgol os oes rhywbeth da ymlaen.*
3. Dw i ddim yn gwyllo'r teledu yn aml, mae'n well gyda fi chwarae ar y Xbox. *I don't watch TV often, I prefer playing on the Xbox.*
4. I usually watch T.V. at the weekend, but sometimes I watch after school. *Fel arfer dwi'n gwyllo teledu ar y penwythnos, ond weithiau dwi'n gwyllo ar ol ysgol.*
5. O bryd i'w gilydd, dw i'n gwyllo teledu ar ol mynd adre, ond mae'n dibynnu os oes rhywbeth da ymlaen. *From time to time, I watch TV after going home, but it depends if there's something good on.*

# Darllen



## Atebwch y cwestiynau yn Saesneg



**Becca**

**Hoff raglenni:** rhaglenni  
coginio, operau sebon

**Pryd:** bob nos ar ol ysgol o saith  
tan naw o'r gloch. Nos Sadwrn

**Pam:** yn ddiddorol a dw i'n  
dysgu sut i goginio pethau newydd

**Gyda pwy:** fy nheulu neu fy  
ffrindiau

**Rhywbeth arall:** hoffi sgwrsio ar  
Facebook hefyd

1. What type of programmes does Becca like watching?
2. When does she watch T.V.?
3. Why does she like watching the programmes?
4. Who does she watch T.V. with?
5. What else does she say?

## Llenwch y bylchau

1. Mae Becca yn hoffi gwylio .....
2. Mae hi'n gwylio teledu bob nos o ..... ac .....
3. Mae hi'n hoffi gwylio ..... achos mae hi'n dysgu .....
4. Mae hi'n gwylio teledu gyda .....
5. Mae hi'n hoffi ..... hefyd

# Darllen



Atebwch y cwestiynau yn Saesneg



**Becca**

**Hoff raglenni:** rhaglenni  
coginio, operau sebon

**Pryd:** bob nos ar ol ysgol o saith  
tan naw o'r gloch. Nos Sadwrn

**Pam:** yn ddiddorol a dw i'n  
dysgu sut i goginio pethau newydd

**Gyda pwy:** fy nheulu neu fy  
ffrindiau

**Rhywbeth arall:** hoffi sgwrsio ar  
Facebook hefyd

1. What type of programmes does Becca like watching? **Cooking and soap operas**
2. When does she watch T.V.? **Every night after school from 7-9 and Saturday night**
3. Why does she like watching the programmes? **Interesting and learns how to cook new things**
4. Who does she watch T.V. with? **Family or friends**
5. What else does she say? **Also likes chatting on Facebook**



1. Mae Becca yn hoffi gwyllo **rhaglenni coginio/operau sebon**
2. Mae hi'n gwyllo teledu bob nos o **saith tan naw ac ar nos Sadwrn**
3. Mae hi'n hoffi gwyllo **teledu/rhaglenni coginio** achos mae hi'n dysgu **sut i goginio pethau newydd**
4. Mae hi'n gwyllo teledu gyda **ei theulu/'r teulu neu gyda ffrindiau**
5. Mae hi'n hoffi **(sgwrsio ar) Facebook** hefyd



# Darllen



Atebwch y cwestiynau yn Saesneg



Becca

Hoff raglenni: rhaglenni  
coginio, operau sebon

Pryd: bob nos ar ol ysgol o saith  
tan naw o'r gloch. Nos Sadwrn

Pam: yn ddiddorol a dw i'n  
dysgu sut i goginio pethau newydd

Gyda pwy: fy nheulu neu fy  
ffrindiau

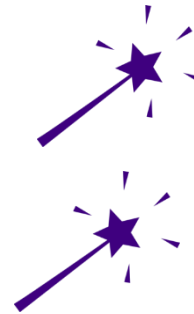
Rhywbeth arall: hoffi sgwrsio ar  
Facebook hefyd

1. What type of programmes does Becca like watching? **Cooking and soap operas**
2. When does she watch T.V.? **Every night after school from 7-9 and Saturday night**
3. Why does she like watching the programmes? **Interesting and learns how to cook new things**
4. Who does she watch T.V. with? **Family or friends**
5. What else does she say? **Also likes chatting on Facebook**

1. Mae Becca yn hoffi gwylio **rhaglenni coginio/operau sebon**
2. Mae hi'n gwylio teledu bob nos o **saith tan naw ac ar nos Sadwrn**
3. Mae hi'n hoffi gwylio **teledu/rhaglenni coginio** achos mae hi'n dysgu **sut i goginio pethau newydd**
4. Mae hi'n gwylio teledu gyda **ei theulu/r teulu ney gyda ffrindiau**
5. Mae hi'n hoffi **(sgwrsio ar) Facebook** hefyd



Good understanding of Becca's profile  
Good vocab on topic of TV  
You've understood the key words  
Spelling correct/mostly correct  
You've shown good reading skills by answering the questions correctly



Remember fy-my, ei-his/her  
Use capital letters for days/names  
Use booklet to correct spelling  
Learn spelling of types of TV in Welsh  
Learn a variety of connectives/linking words  
Work faster to make sure all tasks are completed in lessons



Mynegi barn???

Pam???

Pryd???

Linking words ???

Weithiau, dw i'n hoffi gwylío teledu ar ol ysgol ond mae'n well gyda fi chwarae ar y wii, fel arfer, dw i'n gwylío teledu ar nos Sadwrn yn enwedig, os mae X Factor ymlaen, dw i'n meddwl bod X Factor yn ddoniol a ffordd dda i ymlacio. O bryd i'w gilydd dw i'n mwynhau gwylío omnibws Eastenders ar brynhawn Sul.





- ✓ Write a paragraph of 7 - 8 sentences from memory, give attention to order (organisation)
- ✓ Link sentences and use words like AND (a/ac), BUT (ond), OR (neu)
- ✓ Use 5 different language patterns
- ✓ Express opinions simply
- ✓ use capital letters, question marks, commas and full stops



# Ysgrifennu



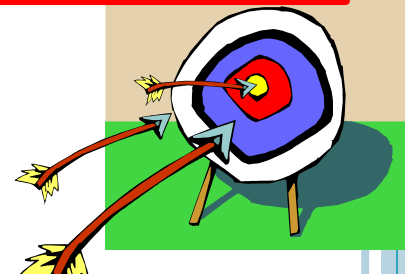
Sut i lwyddo !!

Dw i ddim yn gwylio'r teledu yn aml ond dw i'n mwynhau gwylio pan mae amser gyda fi. Dw i'n hoffi rhaglenni comedi fel Friends neu weithiau My Family. Hefyd, dw i'n hoffi gwylio rhaglenni adlonaint ysgafn ar y penwythnos, fel X Factor neu Strictly Come Dancing... dw i'n hoffi dawnsio!

Fel arfer, dwi 'n gwylio teledu ar ôl ysgol neu rhwng 7 a 9 o'r gloch.

Mae gwylio teledu yn hwyl, er mae'n dibynnu os oes rhywbeth da ymlaen, wrth gwrs!

- ✓ try to vary the way you give your opinion
- ✓ remember to give reasons
- ✓ say when you watch T.V.
- ✓ use linking words to help you make interesting sentences



**NAWR DARLLENWCH WAITH EICH PARTNER – PA LEFEL YDY E/HI???**  
*Now read your partner's work – what level is he/she???*

- ✓ Write a paragraph of 7 - 8 sentences from memory, give attention to order (organisation)
- ✓ Link sentences and use words like AND (a/ac), BUT (ond), OR (neu)
- ✓ Use 5 different language patterns
- ✓ Express opinions simply
- ✓ use capital letters, question marks, commas and full stops

**NAWR DARLLENWCH  
WAITH EICH PARTNER  
- PA LEFEL YDY E/HI?**

*Now peer assess your partner's work – what level is he/she?*

*Give your partner*

 2 stars  
and

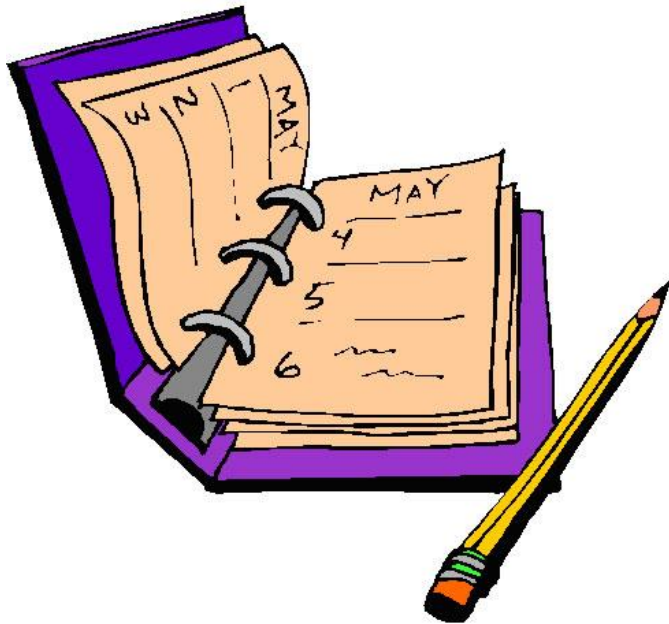
 2 wishes



# Gwaith Cartref



Ysgrifennwch ddyddiadur am y rhaglenni rydych chi'n gwyllo yn ystod yr wythnos nesaf a rhowch eich barn am bob un.



Keep a diary of the programmes you watch during the next week. Write your answers on the homework sheet. remember to give your opinion of each one IN WELSH . If possible also include pictures of the programmes yoyuve watched

Gwyliais i .....  
Roedd e'n .....

I watched .....  
It was .....

